

Verdiem[®] SURVEYOR Sustainability Dashboard

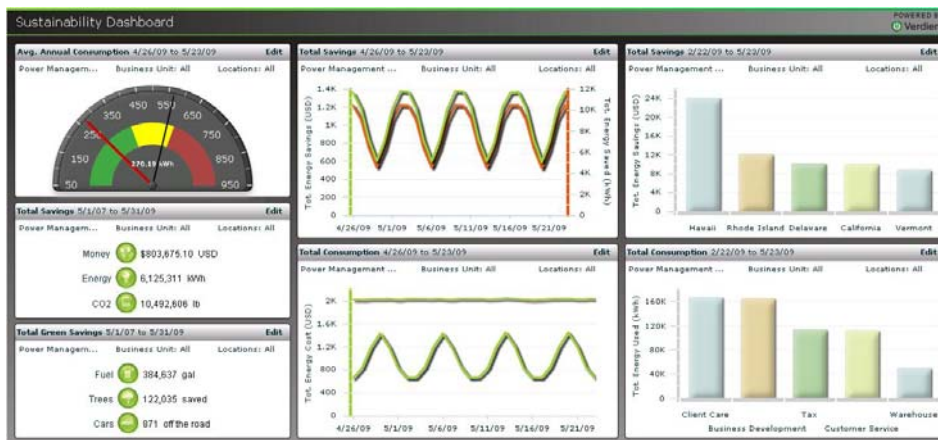
The Sustainability Dashboard is the newest add-on component to SURVEYOR. It provides an easy-to-use, interactive reporting tool that shows how much energy your organization consumes and saves as a result of enforcing SURVEYOR power management policies.

Overview

The Verdiem SURVEYOR Sustainability Dashboard is a flexible and easy-to-use reporting tool that shows how SURVEYOR power management policies impact your organization's bottom line and positively contribute to the environment.

How it Works

The Dashboard is an add-on component to SURVEYOR 5.2 that displays charts and summary reports generated from data collected in your organization's SURVEYOR database. It provides clear views into how much money, energy, carbon and carbon equivalents you have saved since you implemented SURVEYOR.



Easily analyze and see the impact of SURVEYOR on your bottom line and the environment.

Built on Adobe[®] Flash[®] technology, the Dashboard runs inside of a web browser, offering quick interactivity, easy navigation, and an intuitive interface. Designed to provide a high level of flexibility, the Dashboard can be customized to show only the energy or Green consumption and savings metrics you want to see.

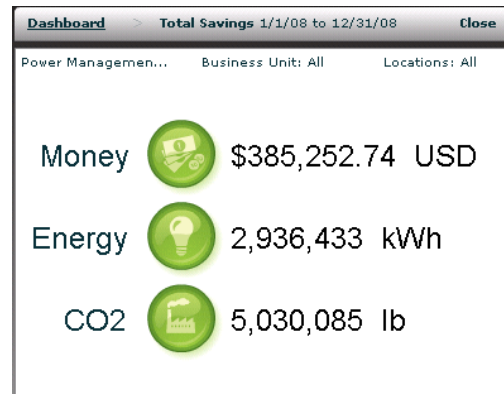
In addition, the Dashboard reports can be configured to show energy savings based on geographical locations and business units to address the needs of the business stakeholders that are responsible for the energy bill and your environmental sustainability initiatives.

To learn more, call toll-free 1-866-Verdiem (866-837-3436) www.verdiem.com

Include chart objects on your intranet and focus only on the reports that are pertinent to you. Communicate savings effectively and increase visibility into your organizations Green IT efforts using the Sustainability Dashboard.

Key Features:

- **Interactive** Flash and browser-based interface for accessing energy reports lets you easily see how much money and energy your organization saves using SURVEYOR.
- **Customizable** chart objects to fit your needs. You have full control over the layout, chart presentation and content that the Dashboard displays.
- **Green Savings** – show the positive environmental impact of your savings by reporting in carbon equivalent units, such as CO₂, fuel or cars off the road.
- **Embeddable chart objects** – share the positive impact of your Green IT initiatives with key stakeholders and colleagues.
- **Energy-savings** reports can be based on geographical location and/or business unit.
- **Increased data accuracy** — add per-PC wattage information and regional energy costs.
- **Fast and responsive** — easily change filter settings; reports render in seconds.



Embed any Dashboard chart object on your internal web portal and communicate your Green IT Initiative.

System Requirements:

- SURVEYOR Server 5.2.2 or higher
- Microsoft SQL Server 2005 SP2 or higher
- Microsoft Internet Information Server (IIS) 6.0 or higher
- .NET 3.5 framework running on Microsoft IIS
- Adobe Flash 9.0.x or higher
- Supported browsers:
 - Internet Explorer 6.0 (Windows XP)
 - Internet Explorer 7.0 or higher (XP & Vista)
 - Firefox 3.0 or higher (Windows XP & Vista)