

TechNote: Power Management Pack for Microsoft® SCCM

Reliable, Accurate Network Updates with Maximum Energy and Cost Savings

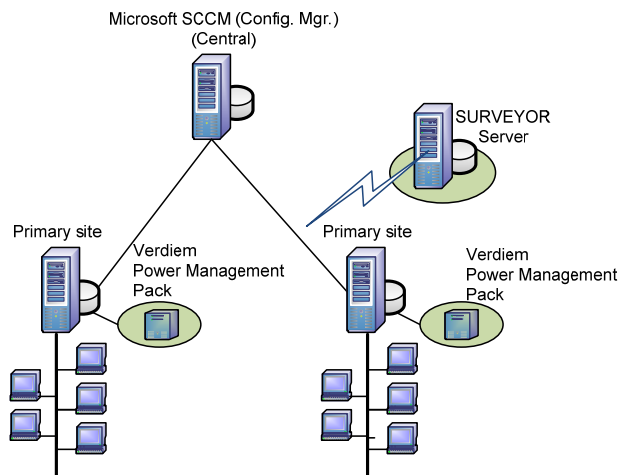
In today's business environment, it is critical for organizations to reduce IT costs while ensuring the reliability and stability of their networks. For Microsoft SCCM users, the additional power of the Verdiem® SURVEYOR PC energy management software enables them to lower network energy costs by as much as 60 percent and reduce associated costs up to \$20-60 per PC annually, all while ensuring more reliable and accurate network maintenance and updates.

How It Works

Microsoft Systems Management Configuration Manager (SCCM) is used by organizations to deploy business-critical software updates and security patches. To minimize the impact these updates have on user productivity, many organizations schedule them outside of normal business hours. Historically, IT departments advise users to leave PCs on at full power at all times so they are available to receive updates and patches. However, this strategy does not allow organizations to save energy wasted on idle computers.

By combining Microsoft SCCM with Verdiem SURVEYOR, organizations have more flexibility to put computers into a low power state when not being actively used, and then bring them up to full power when a software update is ready for distribution.

Organizations are also able to monitor for pending updates, and in combination with Verdiem's Wake on WAN technology, wakeup the appropriate computers for network updates. Network load associated with the download of large updates can also be managed by throttling the PC wakeup process.



Key Benefits

- **Automatically wake machines with pending updates:** This includes an option to “force policy refresh” upon wake as well.
- **“Set It and Forget It” integration with SCCM Server:** No additional management burden, since SURVEYOR activity is logged as SCCM status messages.
- **Enterprise Wake on LAN:** SURVEYOR's Wake on WAN capability safely and reliably wakes computers across subnets without special hardware, network configuration, or additional management overhead.
- **Compliments existing IT management processes:** Automatic coordination of power management with SCCM events so that power savings can be achieved within enterprise environments while actually improving success rate of SCCM deployments and updates.
- **Throttle PC wakeup for large patch updates:** Spread out the PC wakeup process to assure maximum energy savings and reliability of network maintenance and updates.
- **Real-time power control:** Manually wakeup/shutdown/restart individual machines or collections from the SCCM console.

Summary

Through combining Microsoft SCCM with Verdiem SURVEYOR, organizations can be assured they will maximize their energy savings while also increasing the reliability of software distribution tasks and improving the ROI of their SCCM investments.

Product Requirements

- System Center Configuration Manager 2007 or Systems Management Server 2003
- SURVEYOR 5.2.2 or later (with current maintenance)
- Microsoft .NET 2.0 or later
- Wake on LAN-capable client hardware

To learn more, call toll-free 1-866-Verdiem (866-837-3436)

www.verdiem.com