

TechNote: Verdiem® SURVEYOR and Intel® vPro™

Manageability and security are central to Intel's vPro technology. To complement the vPro solution, Verdiem built additional functionality into its SURVEYOR software that leverages vPro's unique capabilities.

Less Power, More Brains

Combining Verdiem SURVEYOR with Intel vPro enhances the power savings and manageability features typically found in a vPro environment, and also exercises the vPro functionality in the context of enterprise security. For example, while vPro's new power coordination and thermal technologies lower power consumption, adding SURVEYOR further reduces consumption by ensuring PCs move into lower power states when not in use.

In addition, vPro allows users to remotely control machines even if they are turned off. SURVEYOR builds on that capability by reliably waking up machines for user activity or administrator tasks even if they are turned off. Finally, SURVEYOR enhances vPro's security functionality by providing secure access to the vPro agent through username/password or enterprise-level security via certificate-based authentication of the server.

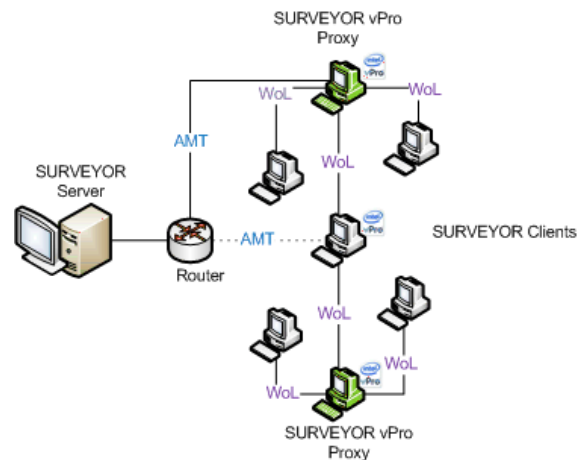
Integration Capabilities

SURVEYOR Wake on WAN technology extends the Wake on LAN support that is included with most modern PCs, providing a reliable method for waking computers over a typical large-organization network that contains multiple network segments or subnets. The integration between SURVEYOR and vPro is demonstrated through SURVEYOR's robust Wake on WAN functionality.

This is especially useful in network configurations where simple Wake on LAN 'Magic Packets' cannot be forwarded to machines in disparate subnets because there are no directed subnet broadcasts. SURVEYOR's Wake on WAN feature overcomes this common corporate network setting by automatically electing proxies in each subnet. The SURVEYOR Server then engages either the primary or secondary proxy to locally wakeup machines in their respective subnets.

Additional SURVEYOR-vPro integration capabilities include the following:

- Detection of vPro-enabled clients
- Preferential election of vPro clients in Wake on WAN proxy election
- Ability to turn off a vPro client even though it has been elected to be a proxy
- Ability to first turn on the vPro client, using the AMT out-of-band mechanism, and use this vPro client to in-turn wakeup all other clients in the broadcast domain



SMB and Enterprise Integration

The SURVEYOR-vPro integration supports both SMB and enterprise deployment modes. For enterprises that mandate increased levels of security, Verdiem has further enhanced its vPro integration capabilities with enterprise-mode support. This functionality includes the following:

- TLS encryption: SURVEYOR server-vPro agent communication is encrypted (HTTP-digest over SSL protocol; often referred to as "TLS-lite")
- TLS authentication: vPro agents confirm SURVEYOR server identity with Client authentication of a server certificate

Customer Results

The partnership between Verdiem and Intel has resulted in offering the following advantages to customers that implement SURVEYOR in a vPro environment:

- Secure restart of machines without relying on Wake on LAN capabilities
- Ability to leverage SURVEYOR in heterogeneous environments with vPro and non-vPro machines to reliably wakeup entire populations of PCs and ease migration to an all-vPro environment
- Increased energy savings with SURVEYOR's out-of-the-box capability to preferentially elect vPro machines (that can by default be shutdown) as wake proxies in disparate subnets

By combining vPro-enabled hardware and the SURVEYOR network energy management software, each computer's power states may be intelligently managed regardless of location, router boundaries or subnet restrictions.